

# capella properties

**Palm Jumeirah, Fully Furnished 2 Ensuite Bedroom  
Apartment with Pristine Sea Views and Guaranteed  
Higher Annual Return On Investment**

Price on request - ID: I-S-R-PMJ-CP-1014-03 - Palm Jumeirah - Apartment



Bedrooms	2
----------	---

Bathrooms	3
-----------	---

Living Area	1771 sq ft
Parking	1
Available From	29-Oct-14
Ensuite	2
Furnished	Fully Furnished with all amenities
Half Bath	1
Posting Date	29/10/2014
View	Seaview/Palm View

BUA 1,771Sq Ft, buy direct from the Developer, a luxurious residential property with fully furnished two bedroom apartment with guaranteed Higher (ROI) Return On Investment for the first two Years, incase you place the apartment in the Rental Pool.

All apartments have spectacular views, overlooking the Arabian Gulf, Atlantis, the Burj Al Arab and the Palm Jumeirah. Apartments are ready to move in and beautifully finished with smooth wooden floors, panoramic views across Palm Jumeirah, the Arabian Gulf and the Dubai Skyline. Finished to the highest quality, with a variety of unique interior touches and designed to make the most natural light, the beautifully appointed, spacious one and two bedroom apartments and are available for freehold ownership.

Owners have the opportunity to place the apartments in a managed rental scheme or to secure a long term contract making it a perfect investment opportunity.

The turn-key rental service that offers a return on investment by leasing apartments during the periods that they are not used by the owners. The scheme has been designed for the owners who want their apartments professionally managed and marketed, whilst having the option of staying in the property and enjoying the facilities for their own vacations

The rental management scheme allows owners to have total peace of mind, knowing that their asset are being managed by world renowned professionals

Buyers have the choice of 1 of the following promotions at the time of purchase. Please note that these promotions are for a limited time and subject to certain terms and conditions.

#### **Option1**

- AED 150,000 cash back on purchased unit. These transactions shall be subject to the standard payment plan of a 10% deposit and 90% payment on signature of the Sales & Purchase Agreement.

- 30% Cash Back over a 3 year period on selected units. 10% of the original purchase price will be returned to the purchaser every year for 3 years free of any service charges or any other costs. The standard 10/90 payment plan applies to this option and purchasers must cede their unit back to the developer to be placed in the Anantara' s Hotel Pool System.

Or

#### **Option2**

- 12 month payment plan with occupation on signing of the Sales & Purchase Agreement

- 10% Down Payment
- 20% on signature of the SPA
- 20% at 6 months
- 50% at 12 months

Unit Features:

- BUA 1,771Sq Ft
- Built-in wardrobes
- Ceramic tiles
- Excellent quality furniture
- Great spa
- Gymnasium
- Light fittings

- Reserved parking space
- Terrace
- Walk-in closets
- Washing machine
- Wooden flooring
- Top-of-the-range kitchen appliances
  - o Beautiful wooden cabinetry
  - o Dishwasher
  - o Electric Oven/Stove
  - o Fridge
  - o Microwave

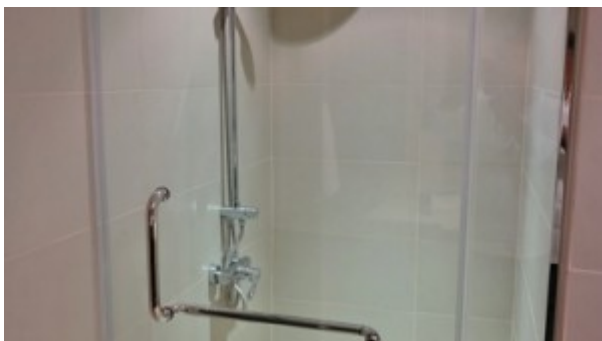
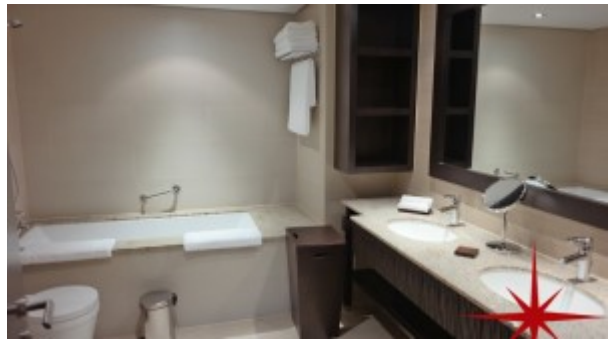
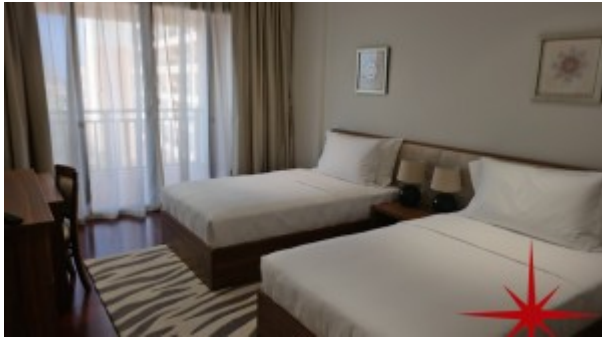
Community Features:

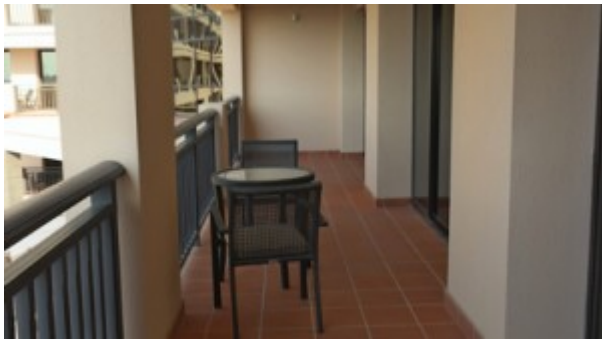
- 5 star hotel facilities
- 110,000Sq Ft temperature controlled lagoon
- 24/7 security
- 24/7 maintenance team availability
- Central A/C
- Central security
- Children's swimming pool
- Children's play
- Coffee shops
- Concierge service
- Covered parking
- Fully furnished
- Landscaped internal courtyards
- Licensed restaurants
- Option of rental pool with competitive ROI
- Property management
- Swimming pool
- Visitors parking

**Please call us for exclusive viewing**  
**056-2054400/04-3518133**  
**Permit No. 4742**

## Property Gallery







## Property URL



image not found  
<http://chart.apis.google.com/chart?cht=qr&chs=250x250&chld=H|0&chl=https%3A%2F%2Fcapellaproperties>

<https://capellaproperties.ae/lifestyle/property/palm-jumeirah-fully-furnished-2-ensuite-bedroom-apartment-with-pristine-sea-views-and-guaranteed-10-annual-return-on-investment-i-s-r-pmj-cp-1014-03/>