

capella properties

Exclusive Investment Opportunity in Luxury Resort – 30% ROI Paid Upfront

AED 2,200,000 - ID: SR-PMJ-CP-0218-01 - Palm Jumeirah - Apartment



Bedrooms	1
Bathrooms	2
Plot Size	1156 sq ft

Living Area	1156 sq ft
Terrace	1 sq ft
Parking	1
Available From	6-Feb-2018
Ensuite	1
Furnished	Fully Furnished with all amenities
Half Bath	1
Price/Area	1903 sq ft
Posting Date	06/02/2018
View	Seaview/Palm View

BUA 1,156Sq Ft, 30% Guaranteed Returns to be paid upfront in one payment at the time of purchase

All apartments have spectacular views, overlooking the Arabian Gulf, Atlantis, the Burj Al Arab and the Palm Jumeirah. Apartments are ready to move in and beautifully finished with smooth wooden floors, panoramic views of Palm Jumeirah, the Arabian Gulf, and the Dubai Skyline. Finished to the highest quality, with a variety of unique interior touches and designed to make the most natural light, the beautifully appointed, spacious one and two bedroom apartments and are available for freehold ownership.

Owners have the opportunity to place the apartments in a managed rental scheme or to secure a long term contract making it a perfect investment opportunity.

The turn-key rental service that offers a return on investment by leasing apartments during the periods that they are not used by the owners. The scheme has been designed for the owners who want their apartments professionally managed and marketed, whilst having the option of staying in the property and enjoying the facilities for their own vacations

The rental management scheme allows owners to have total peace of mind, knowing that their asset are being managed by world renowned professionals

Buyers have the choice of 1 of the following promotions at the time of purchase. Please note that these promotions are for a limited time and subject to certain terms and conditions.

Payment Plan

- 10% Down Payment upon reservation
- 90% upon signing of SPA

Unit Features:

- BUA 1,156Sq Ft
- Built-in Wardrobes
- Ceramic Tiles
- Excellent quality furniture
- Great spa
- Gymnasium
- Light fittings
- Reserved parking space
- Terrace
- Walk-in closets
- Washing machine
- Wooden flooring
- Top-of-the-range kitchen appliances
 - o Beautiful wooden cabinetry
 - o Dishwasher
 - o Electric Oven/Stove
 - o Fridge
 - o Microwave

Community Features:

- 5-star hotel facilities
- 110,000Sq Ft temperature controlled lagoon
- 24/7 security
- 24/7 maintenance team availability
- Central A/C
- Central security
- Children's swimming pool
- Children's play
- Coffee shops
- Concierge service
- Covered parking
- Fully furnished
- Landscaped internal courtyards
- Licensed restaurants
- Option of rental pool with competitive ROI
- Property management
- Swimming pool
- Visitors parking

Limited units, terms, and conditions apply. The apartments are ready to move in

Please call us for exclusive viewing

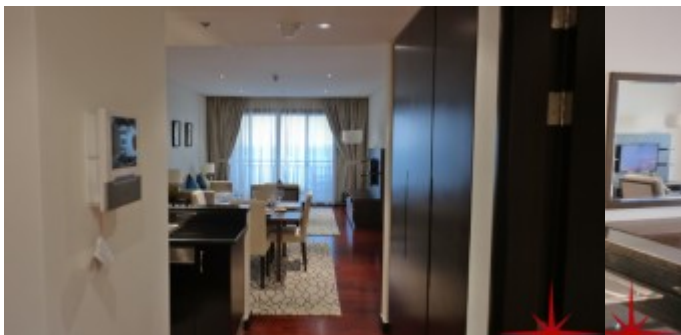
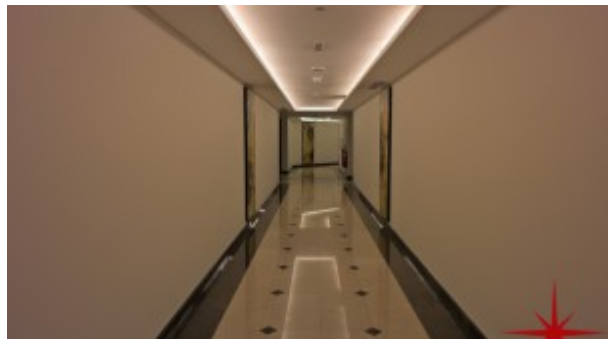
056-2054400/04-3518133

Permit No. 18950

Property Gallery



SAMSUNG CSC



SAMSUNG CSC



SAMSUNG CSC



SAMSUNG CSC



SAMSUNG CSC



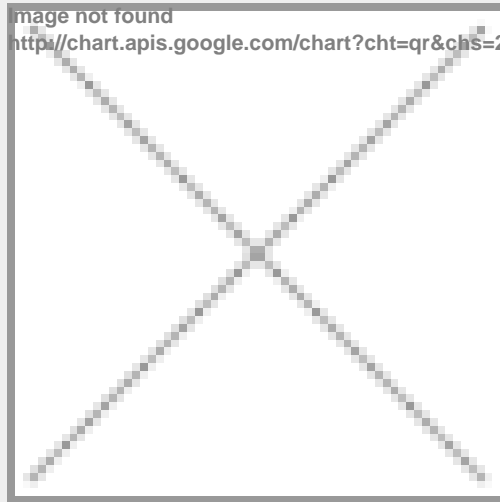
SAMSUNG CSC



SAMSUNG CSC



Property URL



http://chart.apis.google.com/chart?cht=qr&chs=250x250&chld=H|0&chl=https%3A%2F%2Fcapellaproperty

<https://capellaproperties.ae/lifestyle/property/palm-jumeirah-fully-furnished-1-ensuite-bedroom-apartment-with-pristine-sea-views-and-guaranteed-10-annual-return-on-investment-sr-pmj-cp-0218-01/>