

capella properties

**Developer's Stock Depleted, Furnished Studio, Net 10%
Guaranteed ROI In A Renowned Hotel Apt Chain**

AED 1,500,000 - ID: I-S-R-PMJ-CP-0515-14 - Palm Jumeirah - Apartment



Bedrooms	1
Bathrooms	1
Plot Size	377 sq ft

Living Area	377 sq ft
Parking	1
Built in	Off Plan
Available From	3-Jun-2015
Furnished	Fully Furnished
Price/Area	3846 sq ft
Posting Date	03/06/2015
View	Palm/Sea

BUA 377Sq Ft Developer's Stock Depleted, Furnished Studio, Net 10% Guaranteed ROI In A Renowned Hotel Apt Chain

Return on Investment (ROI) for 5 years

10% non-refundable deposit – On booking
30% – 15 days from Reservation/ on signing SPA
20% – 31 May 2016
20% – 15 July 2016
20% – 31 August 2016 (On Completion Date)

Palm Jumeirah continues to lead the market in property value retention. While 45,000 new residential units are scheduled for completion by the end of 2015, only 4% of these projects will take place on the Palm Jumeirah, ensuring real estate in

these areas continues to be highly sought. Its limited residential opportunities combined with its unique settings have placed it at the forefront of rental yields as well with Palm Jumeirah apartments and villas commanding a significant premium over other affluent areas

A home on Palm Jumeirah is not an address, it is a destination unto itself; an enviable station reached in one's life. It inspires awe. Exudes success. Embodies elegance. A home on Palm Jumeirah speaks volumes without uttering a single word.

This project is specifically designed to be seductive. Sleek and undeniably sophisticated with ushering in a new era of design to the world's most famous manmade island. Strikingly at odds with its traditional sandstone surroundings,

The Palm extends 6.5 kilometres into the Arabian Peninsula, and is surrounded by an 11 kilometre-long crescent shaped breakwater built with over 7 million tons of rock and sand. It adds 60 kilometres of beach to the coast of the UAE and will be used for private beach residences and around 30 five star hotels

Unparalleled luxury, individual attention to detail, breadth of villas can be yours amid amazing surroundings and world-class amenities.

The Palm is primarily a retreat and residential area for living, relaxation, and leisure. It contains themed boutique hotels, villas, shoreline apartment buildings, beaches, marinas, restaurants, cafes and a variety of retail outlets

Home to the infamous Atlantis resort with its opulence and water parks a favourite with tourists and residents of Dubai

The Palm Jumeirah has been the singularly most important property development ever launched in Dubai. It is this project that has created global interest, and which has been responsible for the establishment of Dubai as the up and coming international property destination of choice

Unit Features:

- BUA 377Sq Ft
- Built-in wardrobes
- Ceramic tiles
- Fully fitted and furnished studio apartment
- Fully built and equipped kitchen
 - Dishwasher
 - Fridge
 - Microwave
 - Stove/oven

- Washing machine
- Light fittings

Community Features:

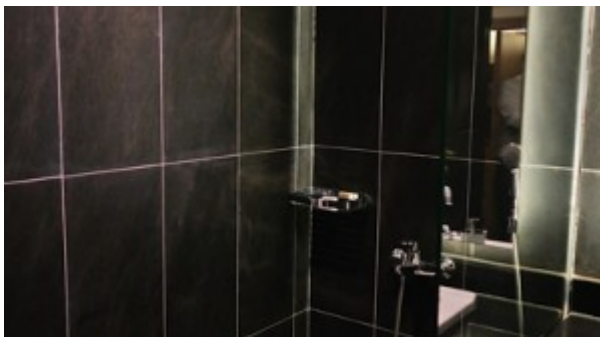
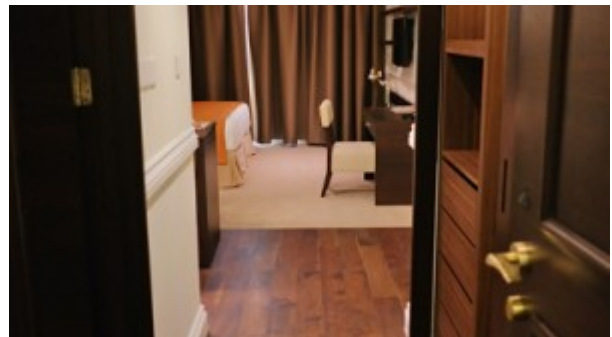
- 24/7 security
- Central A/C
- Children's swimming pool
- Children's play area inside
- Children's play area outside
- Coffee shop
- Firefighting system
- Gymnasium
- Landscaped internal courtyard
- Lease management
- Licensed restaurant
- Maintenance
- Property management
- Swimming pool
- Visitors parking

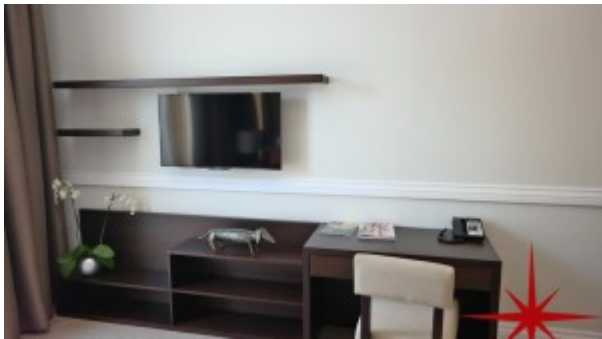
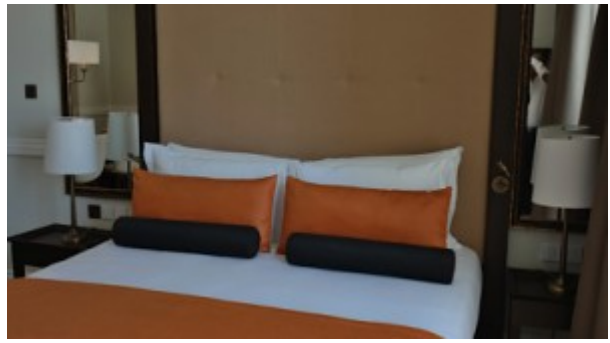
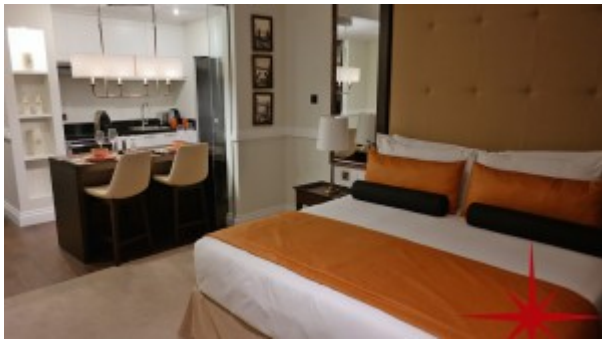
Please call us for exclusive viewing

056-2054400/04-3518133

Permit No. 4742

Property Gallery





Property URL



image not found
<http://chart.apis.google.com/chart?cht=qr&chs=250x250&chld=H|0&chl=https%3A%2F%2Fcapellaproperty>

<https://capellaproperties.ae/lifestyle/property/palm-jumeirah-distinctive-studio-apt-with-net-10-guaranteed-roi-for-5-years-in-a-renowned-fully-furnished-serviced-hotel-apartment-i-s-r-pmj-cp-0515-14/>