

capella properties

Palm Jumeirah Distinctive 1 Bedroom Apartment with Net 10% Guaranteed ROI for 5 Years in a Renowned Fully Furnished Serviced Hotel Apartment

AED 2,329,136 - ID: I/S/R/PMJ/CP/0515/17 - Palm Jumeirah - Hotel Apartment



Bedrooms	1
Bathrooms	2

Plot Size	832 sq ft
Living Area	832 sq ft
Parking	1
Available From	23-Sep-2015
Ensuite	1
Half Bath	1
Price/Area	2799 sq ft
Posting Date	04/06/2015
View	Seaview/Palm View

BUA 832Sq Ft Fully furnished and equipped 1 Bedroom Apartment with Palm Marina View, and Guaranteed 10% Return on Investment (ROI) for 5 years

The Palm Jumeirah continues to lead the market in property value retention. While 45,000 new residential units are scheduled for completion by the end of 2015, only 4% of these projects will take place on the Palm Jumeirah, ensuring real estate in these areas continues to be highly sought. Its limited residential opportunities combined with its unique settings have placed it at the forefront of rental yields as well with Palm Jumeirah apartments and villas commanding a significant premium over other affluent areas

A home on Palm Jumeirah is not an address, it is a destination unto itself; an enviable station reached in one's life. It inspires awe. Exudes success. Embodies elegance. A home on Palm Jumeirah speaks volumes without uttering a single

word.

This project is specifically designed to be seductive. Sleek and undeniably sophisticated with ushering in a new era of design to the world's most famous manmade island. Strikingly at odds with its traditional sandstone surroundings,

The Palm extends 6.5 kilometres into the Arabian Peninsula, and is surrounded by an 11 kilometre-long crescent shaped breakwater built with over 7 million tons of rock and sand. It adds 60 kilometres of beach to the coast of the UAE and will be used for private beach residences and around 30 five star hotels

Unparalleled luxury, individual attention to detail, breadth of villas can be yours amid amazing surroundings and world-class amenities.

The Palm is primarily a retreat and residential area for living, relaxation, and leisure. It contains themed boutique hotels, villas, shoreline apartment buildings, beaches, marinas, restaurants, cafes and a variety of retail outlets

Home to the infamous Atlantis resort with its opulence and water parks a favourite with tourists and residents of Dubai

The Palm Jumeirah has been the singularly most important property development ever launched in Dubai. It is this project that has created global interest, and which has been responsible for the establishment of Dubai as the up and coming international property destination of choice

Unit Features:

- BUA 832Sq Ft
- Built-in wardrobes
- Ceramic tiles
- Fully fitted and furnished studio apartment
- Fully built and equipped kitchen
 - Dishwasher
 - Fridge
 - Microwave
 - Stove/oven
 - Washing machine
 - Light fittings

Community Features:

- 24/7 security
- Central A/C
- Children's swimming pool
- Children's play area inside
- Children's play area outside
- Coffee shop
- Firefighting system
- Gymnasium
- Landscaped internal courtyard
- Lease management
- Licensed restaurant
- Maintenance
- Property management
- Swimming pool
- Visitors parking

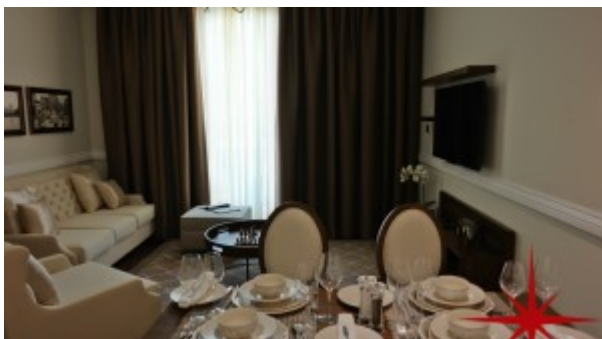
Please call us for exclusive viewing

056-2054400/04-3518133

Permit No. 4742

Property Gallery





Property URL



http://chart.apis.google.com/chart?cht=qr&chs=250x250&chld=H|0&chl=https%3A%2F%2Fcapellaproperty

<https://capellaproperties.ae/lifestyle/property/palm-jumeirah-distinctive-1-bedroom-apartment-with-net-10-guaranteed-roi-for-5-years-in-a-renowned-fully-furnished-serviced-hotel-apartment-i-s-r-pmj-cp-0515-17/>