

capella properties

**Palm Jumeirah, 6 Bedrooms Gallery View Signature Villa,
Arabic Style with incredible Sea View**

AED 32,000,000 - ID: I/S/R/PMJ/CP/0714/01 - Palm Jumeirah Signature Villas - Villa



| | |
|-----------|-------------|
| Bedrooms | 6 |
| Bathrooms | 8 |
| Plot Size | 13000 sq ft |

| | |
|----------------|------------------------------------|
| Living Area | 7000 sq ft |
| Parking | 4 |
| Available From | 19-Jul-14 |
| Driver Room | 1 |
| Drivers Bath | 1 |
| Ensuite | 6 |
| Furnished | Fully Furnished with all amenities |
| Half Bath | 2 |
| Maid Room | 1 |
| Maids Bath | 1 |
| Posting Date | 19/07/2014 |
| Store | 1 |
| View | Sea |

BUA 7,000Sq Ft, Plot Size 13,000Sq Ft, This fully furnished Signature Villa equipped with all amenities has 6 spacious bedrooms with relaxing backyard that features a private pool with immaculate view of the Sea, two entertainment foyers with a large dining room, terrace to sit in the evenings, maid/driver rooms, private pool and beach, with garage parking for two cars

For detailed virtual tours of properties in Dubai, visit www.capellaproperties.ae

Palm Jumeirah like its name is environment friendly reclaimed island. It hosts the famous Atlantis hotel situated at the crescent of the palm. The crescent of the palm is connected to the top of the palm by a subsea tunnel. It has a main trunk which hosts residential apartments, hotels and retail and the villas are located on the fronds protected from the sea by breakwaters

Is the world's largest man-made island. It is a residential and tourism destination launched in the early 2000. It includes a beautiful and luxurious community living with ample amount of entertainment and leisure to be enjoyed by those visiting and living,

with excellent views of the sea and Marina

Within the Palm Jumeirah you will find grocery shops, salons, spas, restaurants and bars. Together with children's play areas, cafes and even a travel agency

Palm Jumeirah is one the most prestigious locations to live in Dubai!

Unit features:

- BUA 7,000Sq Ft
- Balcony
- Built-in wardrobes
- Marble flooring
- Central A/C
- Firefighting system
- Fully furnished with all amenities
- Laundry room
- Light fittings
- Private Beach
- Private pool
- 2 powder rooms for the guests
- Store room
- Terrace with breathtaking views
- Walk-in closet
- Fully fitted Kitchen with beautiful cabinetry and:
 - o Dishwasher
 - o Fridge/freezer
 - o Microwave
 - o Washing machine
 - o Electric – Stove/Oven

Community Features:

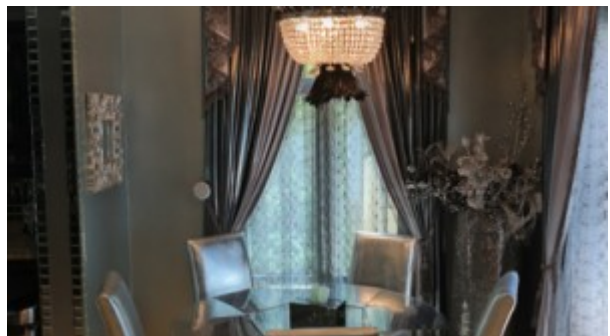
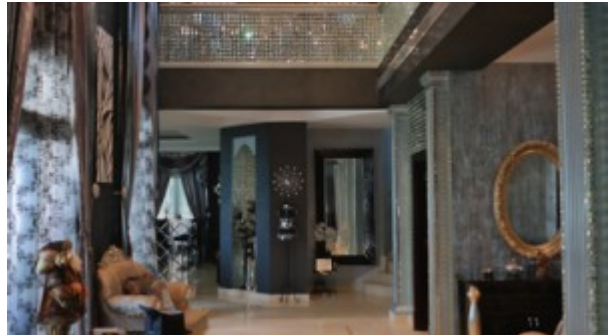
- 24/7 security
- Coffee shop
- Near five star hotels and restaurants
- Pets allowed
- Prayers services
- Visitors parking

Please call us for exclusive viewing

056-2054400/04-3518133

Permit No. 4742

Property Gallery





Property URL



image not found
http://chart.apis.google.com/chart?cht=qr&chs=250x250&chld=H|0&chl=https%3A%2F%2Fcapellaproperty

<https://capellaproperties.ae/lifestyle/property/palm-jumeirah-6-bedrooms-gallery-view-signature-villa-arabic-style-with-incredible-sea-view/>