

# capella properties

**Palm Jumeirah, 5 Bedrooms + Private Theater, Furnished by Versace with High-end Accessories. Sea and Marina Skyline View with Private Beach**

Price on request - ID: I/S/R/PJM/CP/0514/02 - Palm Jumeirah Signature Villas - Villa



Bedrooms	5
----------	---

Bathrooms	8
-----------	---

Plot Size	13000 sq ft
Living Area	7000 sq ft
Parking	2
Available From	18-May-14
Ensuite	6
Furnished	Yes-Fully furnished by Versace
Half Bath	2
Maid Room	1
Maids Bath	1
Price/Area	4102 sq ft
Posting Date	18/05/2014
Store	1
View	Sea / Marina Skyline

**This distinctive newly built spacious villa is fully furnished by Versace, all 5 bedrooms have attached bathrooms, private cinema, state of the art Study, relaxing backyard that features a private pool and private beach with immaculate views of the Sea and Marina Sky Line**

Two entertainment foyers, dining room, terrace to sit in the evenings, maid room, private beach, and a garage parking for two cars

For detailed virtual tours of properties in Dubai, visit [www.capellaproperties.ae](http://www.capellaproperties.ae)

Palm Jumeirah like its name is environment friendly reclaimed island. It hosts the famous Atlantis hotel situated at the crescent of the palm. The crescent of the palm is connected to the top of the palm by a subsea tunnel. It has a main trunk which hosts residential apartments, hotels and retail and the villas are located on the fronds protected from the sea by breakwaters

Is the world's largest man-made island. It is a residential and tourism destination launched in the early 2000. It includes a beautiful and luxurious community living with ample amount of entertainment and leisure to be enjoyed by those visiting and living, with excellent views

of the sea and Marina

Within the Palm Jumeirah you will find grocery shops, salons, spas, restaurants and bars. Together with children's play areas, cafes and even a travel agency

Palm Jumeirah is one the most prestigious locations to live in Dubai!

Unit features:

- BUA 7,000Sq Ft
- Plot size 13,000Sq Ft
- Balcony
- Built-in wardrobes
- Ceramic tiles
- Central A/C
- Firefighting system
- Fully furnished by Versace
- Laundry room
- Light fittings
- Private Beach
- Private pool
- Store room
- Terrace with breathtaking views of Sea and Dubai Marina
- Walk-in closet
- Fully fitted Kitchen with designer cabinetry and high end white woods:
  - o Coffee maker
  - o Dishwasher
  - o Electric – Stove/Oven
  - o Fridge/freezer
  - o Microwave
  - o Washing machine

Community features:

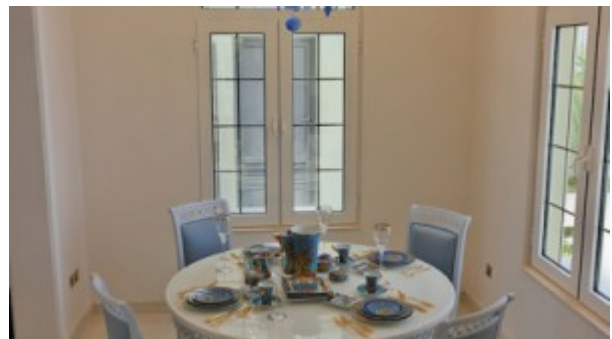
- 24/7 security
- Coffee shop
- Near five star hotels and restaurants
- Pets allowed
- Visitors parking

**Please call us for exclusive viewing**

**056-2054400/04-3518133**

**Permit No. 4742**

## Property Gallery





## Property URL



<https://capellaproperties.ae/lifestyle/property/palm-jumeirah-5-bedrooms-private-theater-furnished-by-versace-with-high-end-accessories-sea-and-marina-skyline-view-with-private-beach/>