

# capella properties

**Jumeirah Island – European Cluster, Garden Hall with Spectacular Lake View**

Property is sold - ID: I-S-R-JIL-OF-0114-02 - European Cluster Jumeirah Islands - Villa



Bedrooms	4
Bathrooms	5
Plot Size	19642 sq ft

Living Area	5284 sq ft
Parking	2
Available From	12-Feb-14
Ensuite	4
Half Bath	1
Maid Room	1
Maids Bath	1
Price/Area	940 sq ft
Posting Date	12/02/2014
Store	1
View	Lake/Canal

**BUA 5,284Sq Ft, Plot size 10,642Sq Ft – A superb Garden Hall villa with spectacular lake view situated in the sought after Jumeirah Islands gated community**

For detailed virtual tours of properties in Dubai, visit [www.capellaproperties.ae](http://www.capellaproperties.ae)

The villa presents a master bedroom with balcony, en-suite dressing room & bathroom and there are 3 further bedrooms all enjoying en-suite facilities. There are 3 family friendly Reception rooms, Kitchen with store, Maids room, and 2 powder rooms

The private rear garden overlooks a lake and has a Private Swimming Pool. To the front there is driveway parking for several vehicles and a covered garage for two vehicles

Jumeirah Islands is a community built on fifty small islands out of which forty-six islands are residential. The community is surrounded by winding waterways and beautiful waterfalls. The manmade islands and lakes are home to 730 well-furnished houses.

The community has a tranquil ambience, in the winters it witnesses up to 500 species of birds migrating, a walk in the evening can simply lead to encounter with peacocks and squirrels while walking around within the green of the community

The ideal environment of Jumeirah Islands brings together nature with modern living. Designed by world renowned architects these are considered to be one of the most sought-after villas in Dubai real estate market

**Property features:**

- 4 en-suite bedroom
- 2 covered parking
- BUA 5,284Sq Ft
- Built-in closets
- Central A/C
- Large study
- Landscaped Internal Courtyards
- Laundry room
- Light fitting
- Marble flooring
- Plot size 10,642Sq Ft
- Private swimming pool
- Two balconies / each is approximately 10 meter long
- Walk-in closet in the master bedroom and second bedroom
- Fully Fitted kitchen with beautiful cabinetry with:
  - o Dishwasher
  - o Electric Stove/Oven
  - o Fridge/freezer

**Community features:**

- 24/7 security
- Children's playing area
- Children's swimming pool
- Community club house
- Firefighting system

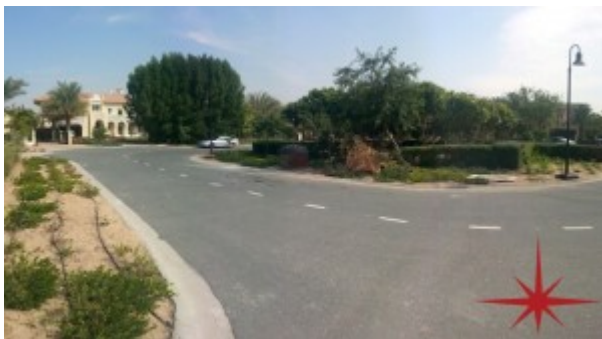
- Fitness club
- Prayers services
- Property Management
- Tennis court
- Visitors Parking

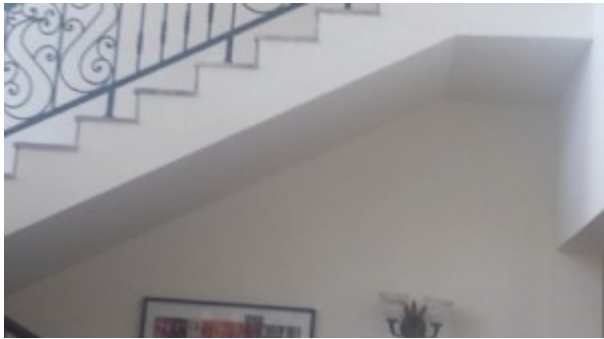
**Please call us for exclusive viewing**

**056-2054400/04-3518133**

**Permit No. 4742**

## **Property Gallery**





## Property URL



<https://capellaproperties.ae/lifestyle/property/jumeirah-island-european-cluster-garden-hall-with-spectacular-lake-view-i-s-r-jil-of-0114-02/>