

capella properties

Downtown, Burj Khalifa, Tastefully Furnished 1 BR En-suite Apt over 87th Floor with Fountain View

AED 5,000,000 - ID: I/S/R/DTD/SZ/0314/01 - Burj Khalifa Down Town Dubai - Apartment



Bedrooms	1
Bathrooms	2
Living Area	1133 sq ft

Parking	1
Available From	5-Mar-13
Ensuite	1
Furnished	Tastefully furnished with all appliances and furniture
Half Bath	1
Price/Area	4500 sq ft
Posting Date	05/03/2014
Store	1
View	Fountains, Address Hotel & Dubai Mall

BUA 1,133 Sq Ft – Tastefully furnished one bedroom en-suite apartment over 87th Floor with a powder room for the guests + study area with breathtaking Dubai Mall Fountain, Dubai Mall and Address Hotel View

For detailed virtual tours of properties in Dubai, visit

www.capellaproperties.ae

Burj Khalifa – The World's tallest man-made structure was completed in 2009. This beautifully designed eco-friendly gigantic tower is located at the core of an integrated township – Downtown Burj Khalifa, which features several more

developments apart from the main tower. It includes developments know as Downtown Dubai, Old Town, Boulevard and Residences and numerous other projects that has made Downtown very attractive for investors and tourists

These developments have luxury Residential suits and serviced apartments. This area hosts a wide selection of luxury and boutique hotels such as Burj Khalifa Lake Hotel & Serviced Apartments, the Address Hotels, Al Manazel, The Palace Hotel and many more world renowned hotels

The world's largest mall The Dubai Mall and an eco-friendly landscape carrying the man-made Burj Khalifa Lake makes Downtown to shop by day and play by night. The tower has direct access to The Dubai Mall, which is the largest shopping and entertainment center in the world. And it's also close to the Souq Al Bahar, where you are sure to enjoy the atmosphere and the variety of restaurants to watch the amazing fountain dance from the ground

The spiraling Burj Khalifa, on its part, offers exclusive corporate offices, residential apartments, four lavish swimming pools, one cigar club, one observation deck, lounge, gymnasium, library and several other amenities, such as restaurants, to enhance its aura. An Armani Hotel, the first of its kind, occupies the first 37 floors and 700 private apartments have been allotted from floor number 45 to 108. The spire, measuring 200m in this 818m high building, has house communication equipment's of various kinds

Last but not the least, Burj Khalifa is the ultimate tower to live and enjoy life!!

Unit Features:

- 1 powder room for the guests
- 1 dedicated parking space
- BUA 1,133 Square Feet
- Built-in closet
- Ceramic tiles
- Light fittings
- One en-suite bedroom
- Study area
- Tastefully furnished
- Valet parking for visitors
- Washing machine & dryer
- Wooden flooring
- Kitchen with
 - o Fully fitted open plan kitchen, finished in wood & steel
 - o Dishwasher
 - o Electric stove/Oven
 - o Fridge/freezer

o Microwave oven

Community Features

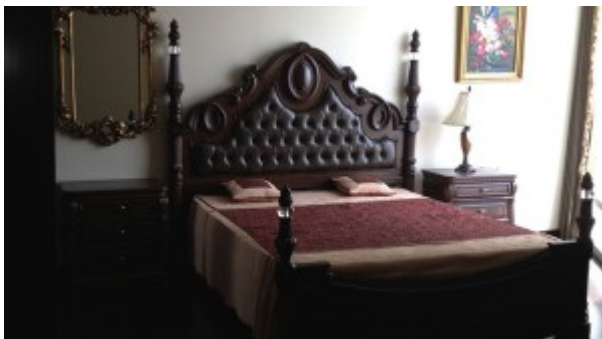
- 24/7 security
- Access to 4 Swimming/infinity pools
- Central A/C
- Children swimming pool
- Coffee shop
- Firefighting system
- Gymnasium
- Landscaped Internal Courtyards
- Maintenance
- Pets allowed
- Prayers services
- Property Management
- Super market

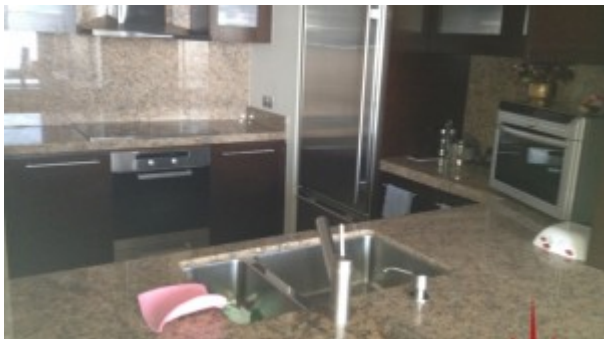
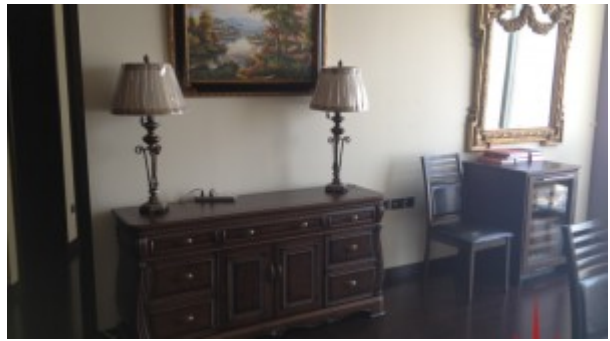
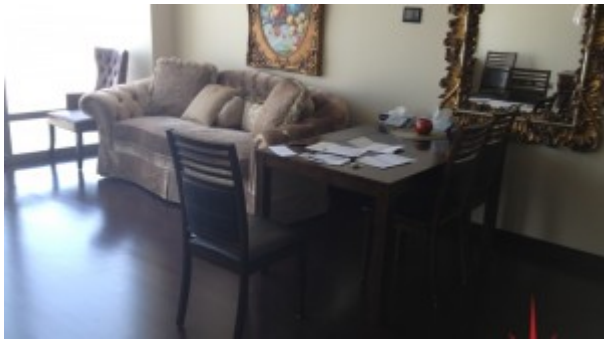
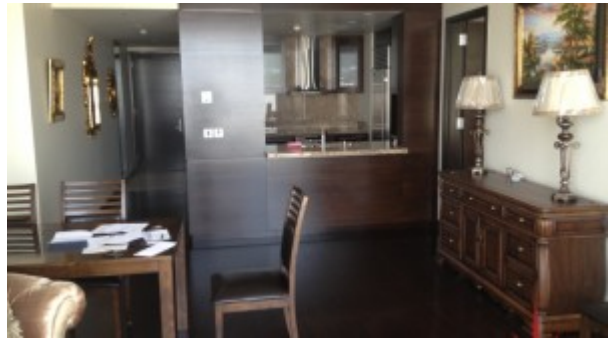
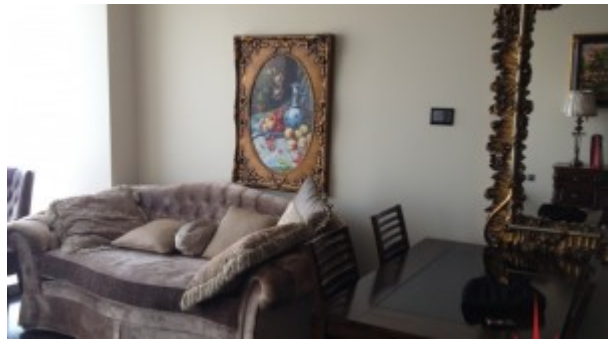
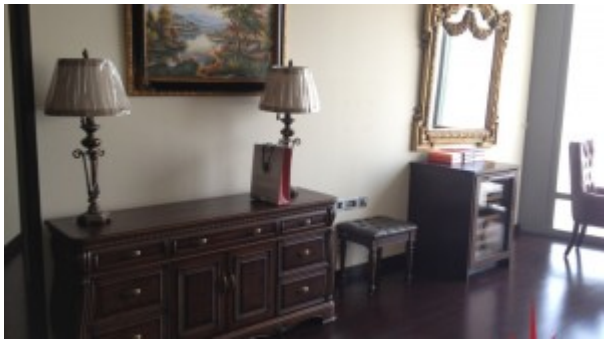
Please call us for exclusive viewing

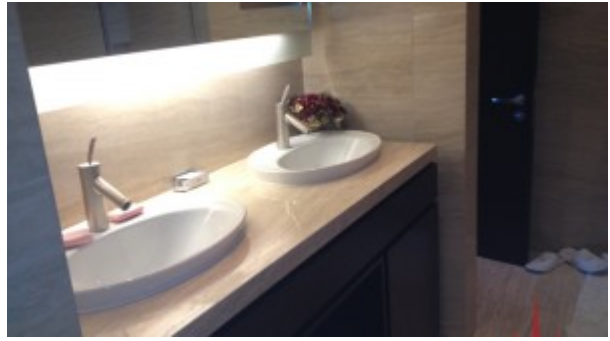
056-2054400/04-3518133

Permit No. 4742

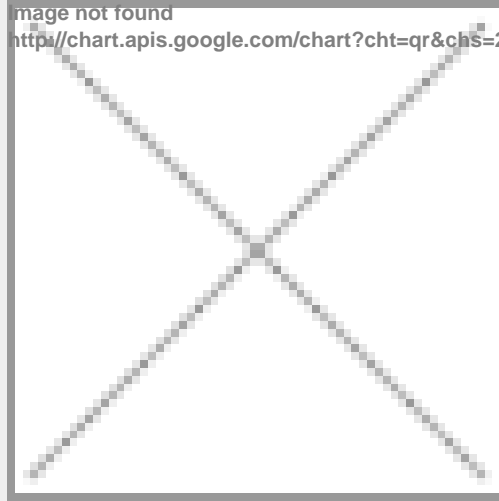
Property Gallery







Property URL



<https://capellaproperties.ae/lifestyle/property/downtown-burj-khalifa-tastefully-furnished-1-br-en-suite-apt-over-87th-floor-with-fountain-view/>