

# capella properties

**Downtown, Burj Khalifa – Apt on a Higher Floor with Full Fountain View – 2 En-suite BR + Maid's Room**

Property is rented - ID: I/L/R/DTD/NN/1013/02 - Burj Khalifa Down Town Dubai - Apartment



Bedrooms	2
Bathrooms	4
Living Area	2036 sq ft

Parking	1
Available From	26-Oct-13
Ensuite	2
Half Bath	1
Maid Room	1
Maids Bath	1
Posting Date	25/10/2013
Store	1
View	Fountain View
Agent's Name	Faisal (Manager)
Agent's Mobile No	0552231752
Agent's Email Address	faisal@agenttrade.com

### **Apartment on a Higher Floor with Full Dubai Mall Fountain View – 2 En-suite Bedrooms plus Maid Room with Attached Bath and a Powder Room for Guests**

Burj Khalifa – The World's tallest man-made structure was completed in 2009. The beautifully designed eco-friendly gigantic tower is located at the core of an integrated township Downtown Burj Khalifa, which features several more developments apart from the main tower. It includes developments know as Downtown Dubai, Old Town, Boulevard and Residences and numerous other projects that has made Downtown very attractive for investors and tourists

These developments have luxury Residential suits and serviced apartments. This area hosts a wide selection of luxury and boutique hotels such as Burj Khalifa Lake Hotel & Serviced Apartments, the Address Hotels, Al Manazel, The Palace Hotel and many more world renowned hotels

The world's largest mall The Dubai Mall and an eco-friendly landscape carrying the man-made Burj Khalifa Lake makes

Downtown to shop by day and play by night. The tower has direct access to The Dubai Mall, which is the largest shopping and entertainment center in the world. And it's also close to the Souq Al Bahar, where you are sure to enjoy the atmosphere and the variety of restaurants to watch the amazing fountain dance from the ground

The spiraling Burj Khalifa, on its part, offers exclusive corporate offices, residential apartments, four lavish swimming pools, one cigar club, one observation deck, lounge, gymnasium, library and several other amenities, such as restaurants, to enhance its aura. An Armani Hotel, the first of its kind, occupies the first 37 floors and 700 private apartments have been allotted from floor number 45 to 108. The spire, measuring 200m in this 818m high building, has house communication equipment's of various kinds

Last but not the least, Burj Khalifa is the ultimate tower to live and enjoy life!!

#### **Units Features**

- 2 en-suite bedrooms
- 1 powder room for the guests
- Maids room with attached bathroom
- Covered area 2,036 Square Feet
- 1 allocated parking space
- Built-in closet
- Walk-in closet
- Laundry room
- Pets allowed
- Electric stove/oven
- Fridge/freezer
- Dishwasher
- Washing machine
- Microwave
- 24 hours security
- Central A/C
- Visitors Parking
- Light fittings
- Ceramic tiles

### Community Features

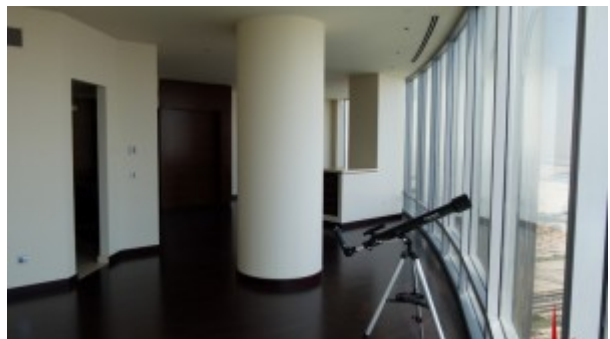
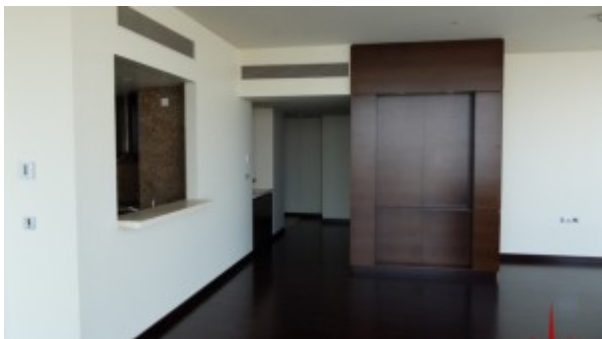
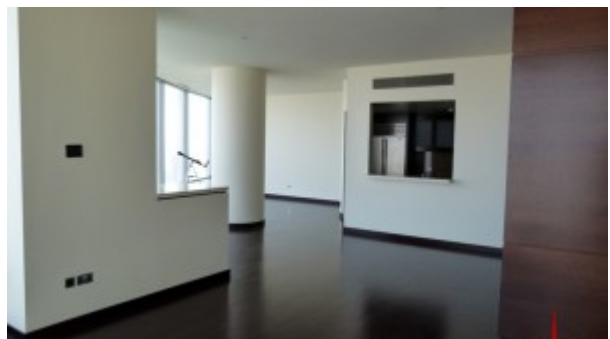
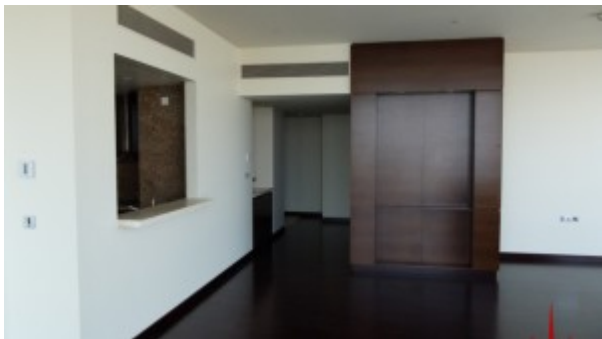
- Property Management
- Maintenance
- Prayers services
- Gymnasium
- Access to 4 Swimming Pool
- Children swimming pool
- Coffee shop
- Firefighting system
- Landscaped Internal Courtyards
- Super market

**Please call us for exclusive viewing**

**056-2054400/04-3518133**

**Permit No. 4742**

### Property Gallery





## Property URL



<https://capellaproperties.ae/lifestyle/property/apt-on-a-higher-floor-with-full-fountain-view-2-en-suite-br-maids-room/>