

# capella properties

**Burj Khalifa, 1 Bedroom Ensuite Vacant Apt on a Lower Floor with Emaar Blvd and Sea View**

**AED 3,800,000** - ID: I/S/R/DTD/CP/1013/08 - Burj Khalifa Down Town Dubai - Apartment



Bedrooms	1
Bathrooms	2
Living Area	1105 sq ft

Parking	1
Available From	27-Oct-13
Ensuite	1
Half Bath	1
Price/Area	3620 sq ft
Posting Date	27/10/2013
View	The Boulevard / Sea

### **01 Bedroom En-suite Apartment with Powder Room & Study on lower floor with E Boulevard & Sea View**

This beautiful apartment has one en-suite bedroom with gorgeous sea view, fully equipped kitchen that opens in large lounge. The bedroom and the lounge has lavish wooden flooring, and the entrance and washrooms has high grade ceramic tiles and fittings complementing this beautiful apartment

Burj Khalifa – The World’s tallest man-made structure was completed in 2009. This beautifully designed eco-friendly gigantic tower is located at the core of an integrated township – Downtown Burj Khalifa, which features several more developments apart from the main tower. It includes developments know as

Downtown Dubai, Old Town, Boulevard and Residences and numerous other projects that has made Downtown very attractive for investors and tourists

These developments have luxury Residential suits and serviced apartments. This area hosts a wide selection of luxury and boutique hotels such as Burj Khalifa Lake Hotel & Serviced Apartments, the Address Hotels, Al Manazel, The Palace Hotel and many more world renowned hotels

The world’s largest mall The Dubai Mall and an eco-friendly landscape carrying the man-made Burj Khalifa Lake makes Downtown to shop by day and play by night. The tower has direct access to The Dubai Mall, which is the largest shopping and entertainment center in the world. And it’s also close to the Souq Al Bahar, where you are sure to enjoy the atmosphere and the variety of restaurants to watch the amazing fountain dance from the ground

The spiraling Burj Khalifa, on its part, offers exclusive corporate offices, residential apartments, four lavish swimming pools, one cigar club, one observation deck, lounge, gymnasium, library and several other amenities, such as restaurants, to enhance its aura. An Armani Hotel, the first of its kind, occupies the first 37 floors and 700 private apartments that have been allotted from floor number 45 to 108. The spire, measuring 200m in this 818m high building, has house communication equipment’s of various kinds

Last but not the least, Burj Khalifa is the ultimate tower to live and enjoy life!!

#### Unit Features:

- BUA 1,105 Square Feet
- One en-suite bedroom
- Study
- 1 powder room for the guests
- 1 allocated parking space
- Built-in closet
- Pets allowed
- 24/7 security
- Central A/C
- Visitors Parking
- Light fittings
- Ceramic tiles
- Fitted washing machine and dryer
- Kitchen with
  - o Fully fitted open plan kitchen, finished in wood & steel
  - o Fridge/freezer
  - o Microwave oven
  - o Dishwasher
  - o Electric stove/Oven

#### Community Features

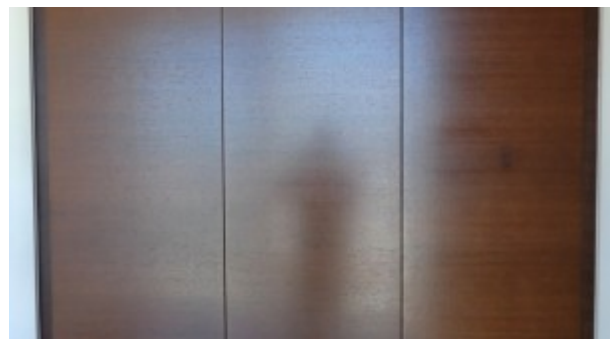
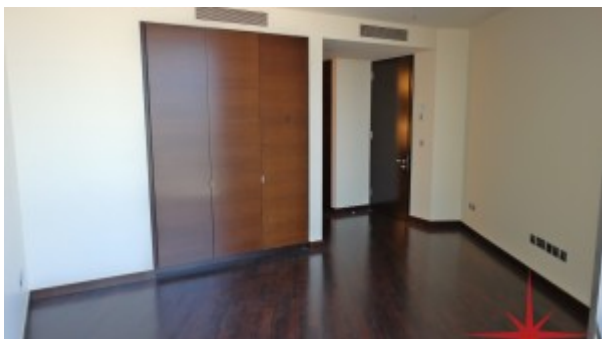
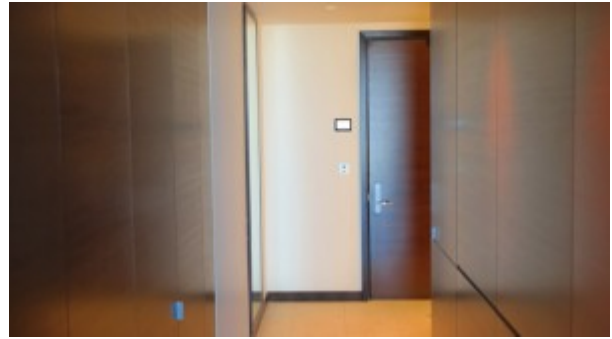
- Property Management
- Maintenance
- Prayers services
- Gymnasium
- Access to 4 Swimming/infinity pools
- Children swimming pool
- Coffee shop
- Firefighting system
- Landscaped Internal Courtyards
- Super market

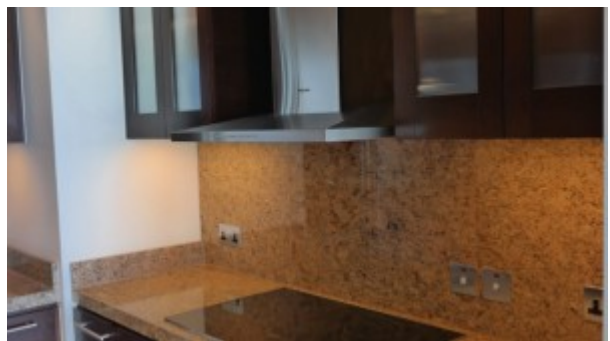
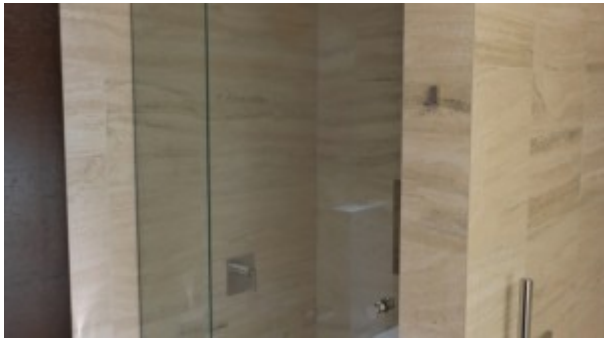
**Please call us for exclusive viewing**

**056-2054400/04-3518133**

**Permit No. 4742**

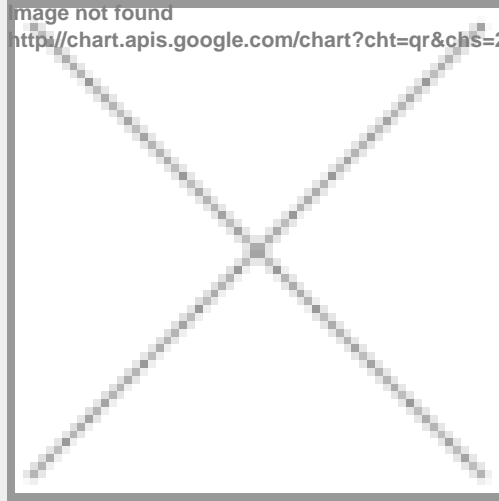
## **Property Gallery**







## Property URL



<https://capellaproperties.ae/lifestyle/property/01-br-en-suite-apt-powder-room-study-on-lower-floor-with-e-boulevard-sea-view/>