

Complete experience for multi-nationals, easy accessibility and work close to the city

AED 1,486,800 - ID: LC-DFC-OF-0717-02 - Dubai Festival City Dubai Festival City - Full Floor Hotel Office



Plot Size	10620 sq ft
Living Area	10620 sq ft
Parking	10
Available From	12-Sep-2017
Price/Area	160 sq ft
Posting Date	12/09/2017
View	Business Bay / Festival Center

BUA 10,620 Sq Feet – Complete Experience for Multinationals, Easy Accessibility and Work Close to the City

For detailed virtual tours of properties in Dubai, visit www.capellaproperties.ae
capella properties, Redefining Real Estate in Dubai UAE.

Dubai festival city is a complete package, with basic amenities and a full blown work-life-play balance. The advantage of working within the community with easy access to the mall renowned for the shopping experience – the community also has two five-star hotels next door in case there is a need to host guests with a couple of very exciting eating out restaurants/bars.

For employees that want to use public transport, the ABRAA Service has a regular connection to Al-Jadaf metro station across the creek making the commute easy and accessible; parking is not an issue as there is plenty of available parking in the adjacent mall for free.

The availability of international school, a community center, golf course and an up market residential area at a stone's throw make the possibility of not leaving the community a reality.

This space is for a multi national, that want to project a particular image – it exudes prestige, power, and success. Panoramic views of the business bay bridge and a mix of old/new Dubai come together to form a magnificent view privy to the occupants.

Unit Features:

- BUA 10,620 Sq Ft
- Shared washroom with provision for private
- Shared pantry with provision for private
- Fast moving lifts
- Maintenance included in rent

Community Features:

- 24/7 Security
- Central A/C
- Coffee shop
- Common washroom
- Firefighting system
- Maintenance
- Fitness club
- Prayers services
- Visitors parking

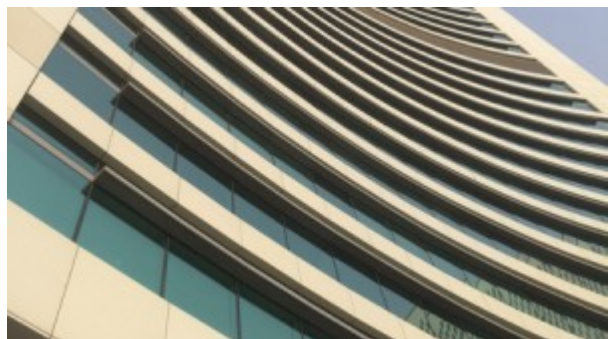
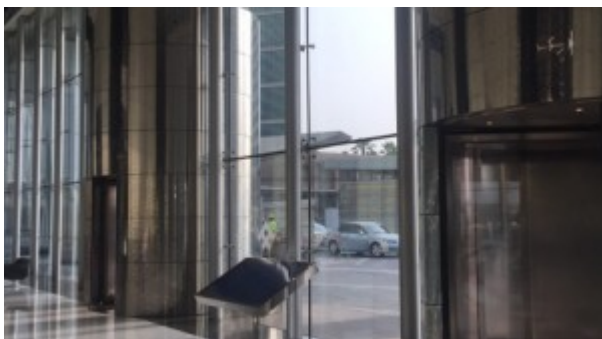
Please call us for exclusive viewing

056-2054400/04-3518133

Permit No. 4742

Property Gallery





Property URL



<http://chart.apis.google.com/chart?cht=qr&chs=250x250&chld=H|0&chl=https%3A%2F%2Fcapellaproperties.ae/property/shell-and-core-option-for-multi-nationals-interested-in-a-complete-package-lc-dfc-of-0717-02/>

<https://capellaproperties.ae/property/shell-and-core-option-for-multi-nationals-interested-in-a-complete-package-lc-dfc-of-0717-02/>