

# Quad villas next to the lake | part of a beautiful community

AED 5,300,000 - ID: SR-MBR-OF-0218-01 - Mohammad Bin Rashid City Mohammad Bin Rashid City - Townhouse



## BUA 3,302 sq Ft – Quad villas next to the lake, part of a beautiful community

Bedrooms	4
Bathrooms	5
Plot Size	3302 sq ft
Living Area	3302 sq ft
Terrace	1 sq ft
Parking	2
Built in	Q4-2018
Available From	28-Feb-2018
Ensuite	4
Furnished	Un furnished
Half Bath	1
Maid Room	1
Maids Bath	1
Price/Area	1651 sq ft
Posting Date	28/02/2018
Store	1
View	Community / Pool

To view the Virtual Tour of this property, click  
For detailed virtual tours of properties in Dubai, visit  
[www.capellaproperties.ae](http://www.capellaproperties.ae)

The best thing about Mohammed Bin Rashid city, it is 5 minutes drive from downtown, close to Dubai international airport, easily accessible from Sheikh Zayed road. The city is uniquely built on a mixed-used developmental program, a city that integrates residential, commercial, cultural, institutional aspects of a community bringing them together functionally.

Very closely linked to the Business Bay area, Dubai design district, inclusive of the mall of the world – connecting arts, leisure, and entertainment.

These townhouses are surrounded by 183 acres of land out of which 30% is open space. Close to the city yet secluded, a private place. The townhouses are designed for luxury with ample space, numerous options in layouts suiting your individual need, each townhouse comes with a fitted lift, marble flooring, quality fixtures.

**Unit Features:**

- " BUA 3,302
- " 2 allocated parking space in the basement
- " Built-in wardrobe
- " Ceramic Tiles
- " Fridge
- " Maids room

**Community Features:**

- " 24/7 Security
- " Central A/C
- " Common washroom
- " Children's play area outside
- " Clubhouse
- " Pets allowed
- " Firefighting system
- " Fitness club
- " Health clinic
- " International school
- " Maintenance
- " Prayers services
- " Visitors parking

**Please call us for exclusive viewing**

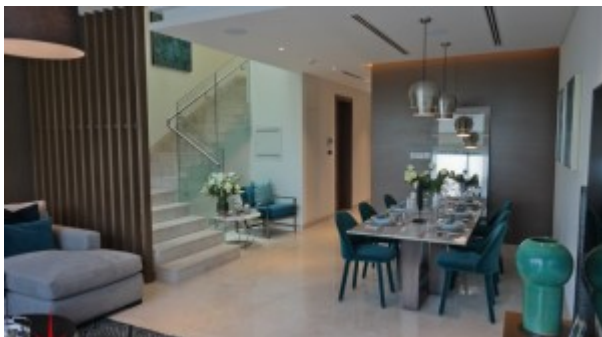
**056-2054400/04-3518133**

**RERA Permit No. 18285**

**Property Gallery**



SAMSUNG CSC



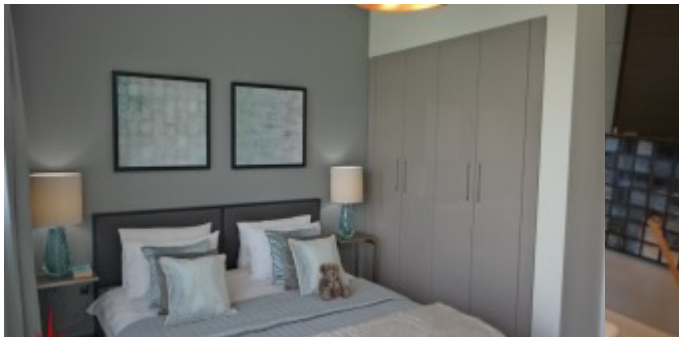
SAMSUNG CSC



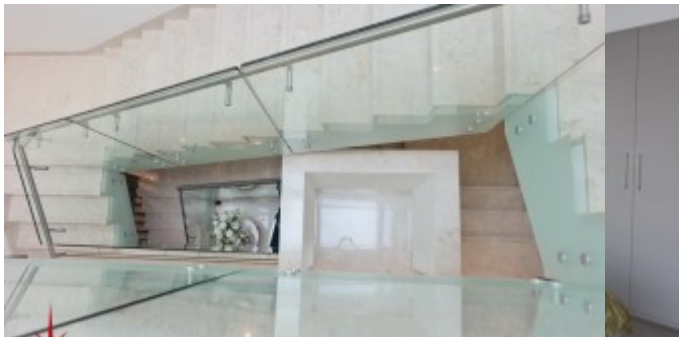
SAMSUNG CSC



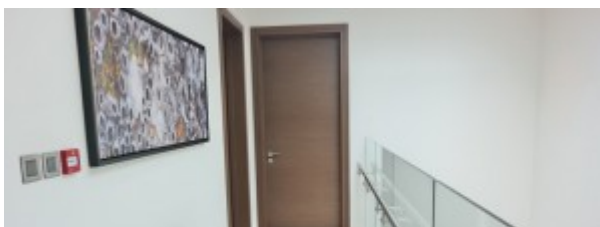
SAMSUNG CSC



SAMSUNG CSC



SAMSUNG CSC



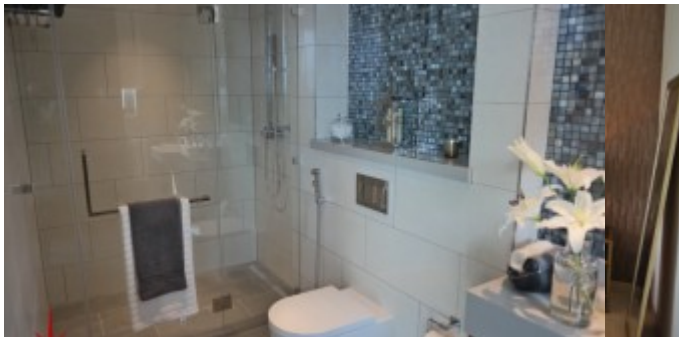
SAMSUNG CSC



SAMSUNG CSC



SAMSUNG CSC



SAMSUNG CSC



SAMSUNG CSC

## Property URL



<http://capellaproperties.ae/property/quad-villas-next-to-the-lake-part-of-a-beautiful-community-sr-mbr-of-0218-01/>