

Palm Jumeirah, Marina 6, 2 BR Large Apt with Stunning Views for Lease

Property is rented - ID: I-L-R-PMJ-OF-XX-0515-03 - Marina Residences Palm Jumeirah - Apartment



BUA 1,851Sq Ft, Palm Jumeirah, Marina 6, 2 BR large apt with stunning views for lease

Bedrooms	2
Bathrooms	3
Living Area	1851 sq ft
Parking	1
Available From	7-May-2015
Ensuite	2
Half Bath	1
Price/Area	86 sq ft
Posting Date	07/05/2015
View	Partial Marina

Located at the tip of the Palm Jumeirah, Marina Residences is a six-tower complex offering a mix of two-and three-bedroom apartments with balconies overlooking the sea or the pool. The towers feature gardens, outdoor pool, an infinity pool, gym and children's play area. Parking is restricted through card access. There is also 24-hour security and maintenance services for the towers. The homes are ideal for those who love a waterfront lifestyle. The units showcase traditional elegance combined with modern interiors.

Within the Palm Jumeirah you will find grocery shops, salons, spas, restaurants and bars. Together with children's play areas, cafes and even a travel agency

Is the world's largest man-made island. It is a residential and tourism destination launched in the early 2000. It includes a beautiful and luxurious community living with ample amount of entertainment and leisure to be enjoyed by those visiting and living, with excellent views of the sea and marina

Palm Jumeirah like its name is environment friendly reclaimed island. It hosts the famous Atlantis hotel situated at the crescent of the palm. The crescent of the palm is connected to the top of the palm by a subsea tunnel. It has a main trunk which hosts residential apartments, hotels and retail and the villas are located on the fronds protected from the sea by breakwaters

Palm Jumeirah is one the most prestigious locations to live in Dubai

Unit features:

- BUA 1,851Sq Ft
- 1 balcony
- 2 en-suite bathroom
- Built-in wardrobe
- Ceramic tiles
- Dishwasher
- Fridge
- Light fittings
- Oven electric
- Stove electric
- Walk-in closet in master bedroom
- Washing machine

Community features:

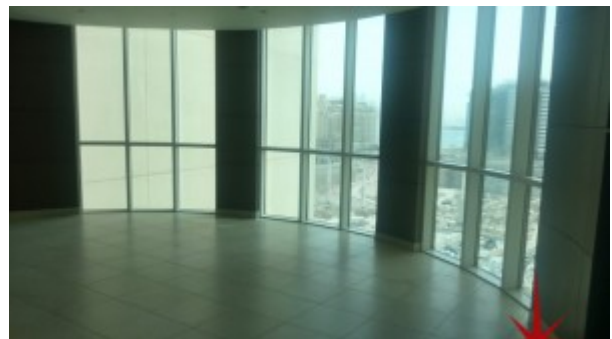
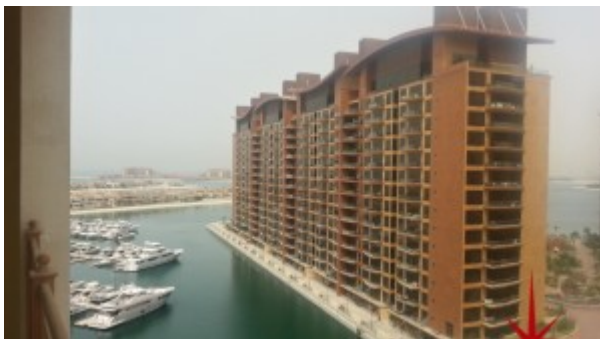
- 24/7 Security
- Central A/C
- Childrens play area inside
- Coffee shop
- Children's play area outside
- Firefighting system
- Infinity pool
- Licensed restaurant
- Maintenance
- Pets allowed
- Visitors parking

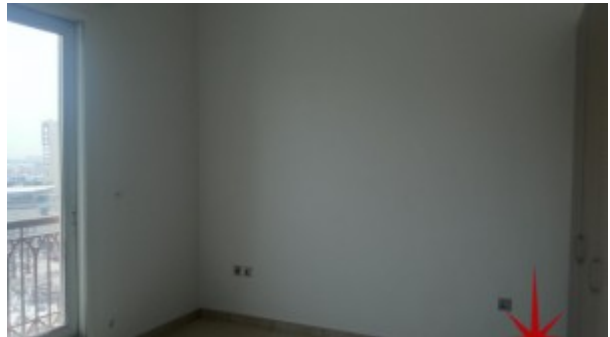
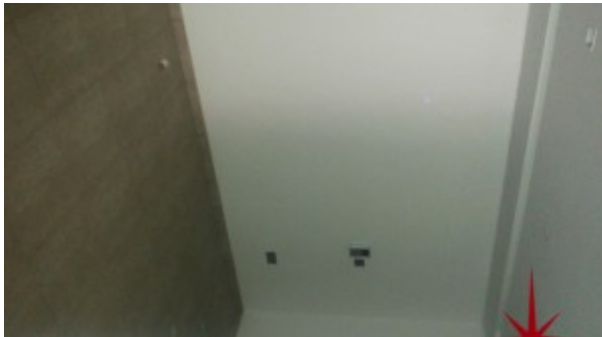
Please call us for exclusive viewing

056-2054400/04-3518133

Permit No. 4742

Property Gallery





Property URL



http://chart.apis.google.com/chart?cht=qr&chs=250x250&chld=H|0&chl=https%3A%2F%2Fcapellaproperty

<https://capellaproperties.ae/property/palm-jumeirah-marina-6-2-br-large-apt-with-stunning-views-for-lease-i-l-r-pmj-of-xx-0515-03/>