

# Apartment next to the beach, chiller/Ac included in the rent

**AED 160,000** - ID: I-L-R-PMJ-OF-0416-04 - Palm Jumeirah Shoreline Apartments - Apartment



## BUA 1,671 Sq Ft, Furnished apartment just a walk away from the beach

Bedrooms	2
Bathrooms	3
Plot Size	1671 sq ft
Living Area	1671 sq ft
Parking	1
Available From	18-Apr2016
Ensuite	2
Furnished	Fully Furnished
Half Bath	1
Maid Room	1
Maids Bath	1
Price/Area	96 sq ft
Posting Date	18/04/2016
View	Community View

For detailed virtual tours of properties in Dubai, visit

[www.capellaproperties.ae](http://www.capellaproperties.ae)

capella properties, Redefining Real Estate in Dubai UAE

Furnished apartments with all the amenities, located on the trunk of palm Jumeirah these are apartments come equipped with everything. From kettle to cutlery to even an Iron.

Palm Jumeirah is the world's largest man-made island. It is a residential and tourism destination launched in the early 2000. It includes a beautiful and luxurious community living with ample amount of entertainment and leisure to be enjoyed by those visiting and living, with excellent views of the sea and marina

Palm Jumeirah like its name is environment friendly reclaimed island. It hosts the famous Atlantis hotel situated at the crescent of the palm. The crescent of the palm is connected to the top of the palm by a subsea tunnel. It has a main trunk which hosts residential apartments, hotels and retail and the villas are located on the fronds protected from the sea by breakwaters

Palm Jumeirah is one the most prestigious locations to live in Dubai

### Unit features:

- BUA 1,671 Sq Ft
- 1 allocated parking space in the basement

- 2 en-suite bathroom
- Ceramic tiles

- Cutlery
- Dishwasher
- Electric stove
- Electric micro-wave
- French-press
- Iron with stand
- Kettle
- Laundry room
- Maids room
- Powder room
- Toaster
- Tv
- Walk in closet
- Washing machine

**Community features:**

- 24/7 Security
- Central Air conditioned
- Children's play area
- Coffee shop
- Firefighting system
- Fitness club
- Maintenance
- Party Hall
- Swimming pool
- Visitors parking

**Please call us for exclusive viewing**

**056-2054400/04-3518133**

**Permit No. 4742**

## Property Gallery



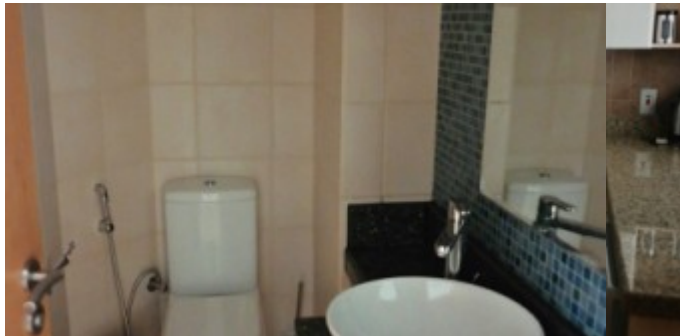
SAMSUNG CSC



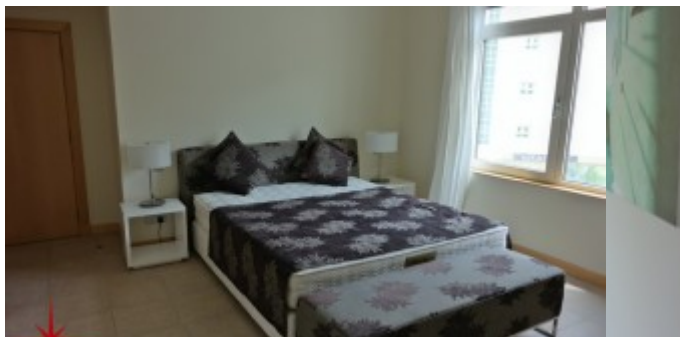
SAMSUNG CSC



SAMSUNG CSC



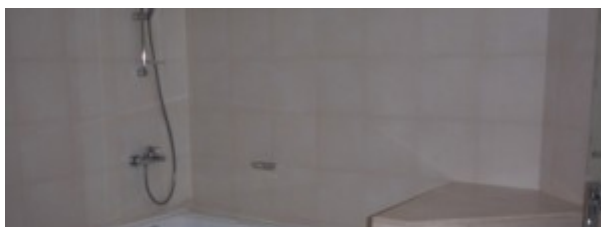
SAMSUNG CSC



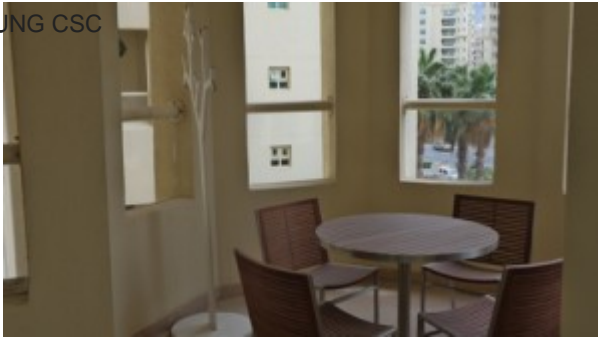
SAMSUNG CSC



SAMSUNG CSC



SAMSUNG CSC



SAMSUNG CSC

## Property URL



http://chart.apis.google.com/chart?cht=qr&chs=250x250&chld=H|0&chl=https%3A%2F%2Fcapellaproperty

<https://capellaproperties.ae/property/furnished-apt-just-a-walk-away-from-the-beach-i-l-r-pmj-of-0416-04/>