

capella properties

Serviced Mansions, Ultra-Prestigious Living Designed to Suit Your Lifestyle

AED 15,000,000 - ID: SR-PMJ-CP-1017-02 - Palm Jumeirah - Penthouse



Bedrooms	5
Bathrooms	6
Plot Size	From 4,800 - 15,064 sq ft

Living Area	From 4,800 - 15,064 sq ft
Parking	Valet Parking
Built in	June - 2018
Available From	25-Oct-2017
Driver Room	Specific Common Area Available
Ensuite	5
Furnished	Fully Furnished and Serviced
Half Bath	1
Maid Room	1
Maids Bath	1
Price/Area	1660 sq ft
Posting Date	25/10/2017
Store	Yes
View	Panoramic Views of Arabian Gulf / Dubai Skyline / Palm Jumeirah

**BUA From 4,800 – 15,064Sq Ft,
2, 3, 4 & 5 Bedroom + Cinema
Room Serviced Mansions, Ultra-
Prestigious Living Pick the One
Suited Your Lifestyle**

For detailed virtual tours of properties in Dubai, visit www.capellaproperties.ae capella properties, Redefining Real Estate in Dubai UAE

The Alef brand is truly the first of its kind through design, space, location, and genuine lifestyle experiences. It is located on the exclusive western crescent of Palm Jumeirah, designed and crafted to provide residents a living environment that is unparalleled in Dubai. Serviced by **W Dubai – The Palm Hotel**, this development offers a combination of the extraordinary in every form – from

views, building materials to space and services.

These mansions provide a range of 2,3,4 and 5 bedroom residences

Ground floor residences with private gardens Penthouses

These sprawling residences have been designed and fitted to The Alef's exacting standards. The spacious living offered by The Alef Residences ensures every home has the feel of a mansion. This exclusive project offers a unique floor plan for each unit. The residences come in different types to cater to the needs of our discerning clientele; providing the perfect blend of indoor and outdoor space.

MANSION 3

3 Bedroom + Cinema room with Palm and Marina views

MANSION 3

3 Bedroom + Cinema room with Palm and Marina views

MANSION 5

3 Bedroom with 2 Master suites + Cinema room and expansive Dubai skyline views

MANSION 7

4 Bedroom + Cinema room with private garden and private swimming pool

MANSION 8

4 Bedroom + Cinema room with sweeping Gulf views

Key Features:

- 24 Hours Security

- 24 Hours Residential Concierge
- 2 high-quality kitchens/ Presentation Kitchen & Preparation Kitchen
- A private library or media room
- Cinema (Seating 16 persons)
- Courtesy of Limousine Service/ Personal Driver Service
- Elaborated & Spacious Walk-in Wardrobes in the master bedrooms
- In-Residences Catering
- Only two residences on each floor and 14 residences per mansion
- Private Terraces
- Private Spa
- VIP Club 104 Membership – A private club for the Alef residents that will be offering the 5-star lifestyle within their grasp•W
- Dubai – Restaurants/Events (Owners Privileges)
- W Dubai – Private Beach 500m
- Private Lounge, for Ladies and Gents
- Personal Concierge Service

Payment Plan

Down Payment – 15% (of the total value of the unit) + 4% OQOOD (registration)

2nd Installment – 10% of the total unit value – paid 90 days after the down payment date

3rd Installment – 10% of the total unit value – paid 180 days after the down payment date

Last Installment – 65% of the total unit value – paid upon hand over of the unit

This project will be ready by June 2018

Price Range

2 BED- from AED 15M to AED 18M (4,800 SQFT – 6,500 SQFT)

3 BED – from AED 15M to 25M (6,800 SQFT – 14,000 SQFT)

4 BED – from AED 16M – 65M (6,800 SQFT – 16,000 SQFT)

5 BED – from AED 20M – 25M (7,800 SQFT – 8,000 SQFT)

Unit features:

- BUA 15,064Sq Ft
- Light fittings
- Builtin Wardrobe
- Walkin Closets
- Store Room
- Electric Oven
- Electric Stove
- Laundry Room
- Private Terrace

Community features:

- 24/7 security
- Central A/C
- Children's play area inside
- Children's play area outside
- Firefighting system
- Gymnasium
- Lease management
- Licensed restaurants
- Maintenance
- Pool Bar
- Running & Walking Tracks
- Tennis Courts

- Property Management
- Visitor Parking
- Serviced Private Beach
- Swimming Pool
- Sports Hut
- Picnic and Barbecue Area

Please call us for exclusive viewing

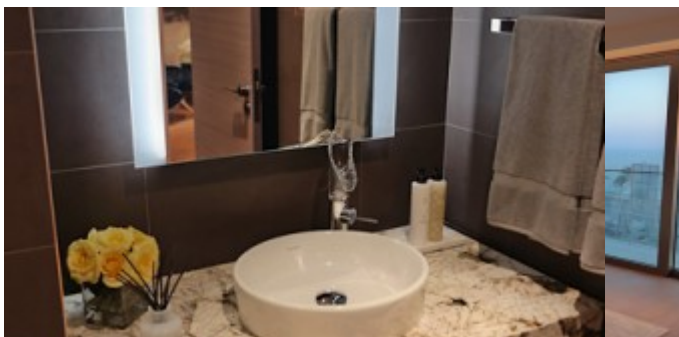
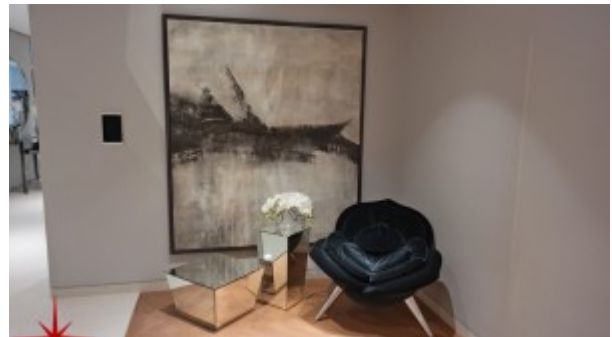
056-2054400/04-3518133

Permit No. 18285

Property Gallery



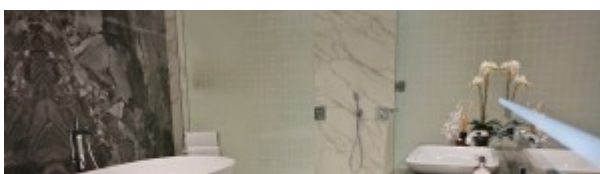
SAMSUNG CSC



SAMSUNG CSC



SAMSUNG CSC



SAMSUNG CSC



SAMSUNG CSC



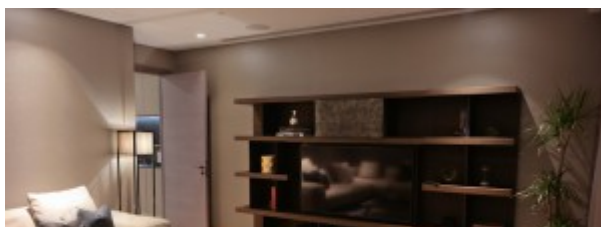
SAMSUNG CSC



SAMSUNG CSC



SAMSUNG CSC



SAMSUNG CSC



SAMSUNG CSC



SAMSUNG CSC



SAMSUNG CSC



SAMSUNG CSC



Property URL



<https://capellaproperties.ae/lifestyle/property/serviced-mansion-designed-to-suit-your-lifestyle-sr-pmj-cp-1017-02/>