

# capella properties

**Palm Jumeirah, Exceptional 5 Bedrooms Villa with Roof Deck, a Lift, Private Pool, Garden and Direct Access to Private Beach**

**AED 15,500,000** - ID: I-S-R-PJM-CP-0415-03 - Kingdom of Sheba Palm Jumeirah



Bedrooms	5
Bathrooms	7

Plot Size	10000 sq ft
Living Area	14425 sq ft
Parking	3
Built in	2015
Available From	2015
Ensuite	5
Furnished	Optional
Half Bath	2
Maid Room	1
Maids Bath	1
Price/Area	1075 sq ft
Posting Date	28/04/2015
Store	1
View	Sea

BUA 14,425Sq Ft, Beautiful 5 bedrooms sea facing villa with Private Lift, Pool, Private Landscaped Garden, Roof Deck with Entertainment Foyer and Jacuzzi plus Washroom with Stunning Palm Jumeirah Views, direct access to private beach. Covered Parking for Three Vehicles in the Basement, Maids Quarter with a Washroom, Basement. Set within lush grounds on the curving breakwater of the Crescent, Palm Jumeirah and with sweeping views of the Arabian Gulf or Dubai's dramatic skyline

The Palm Jumeirah continues to lead the market in property value retention. While 45,000 new residential units are scheduled for completion by the end of 2015, only 4% of these projects will take place on the Palm Jumeirah, ensuring real estate in these areas continues to be highly sought. The world's elite are flocking to this man made island, and this villa is one of the very few villas that are located in this marvellous villa project on Palm Jumeirah, Dubai

Private lift with access to all floors

#### **Ground Floor:**

Large entertainment foyer with formal dining area for the guests, fully equipped kitchen with ample space for a small dining table for informal use, one bedroom with washroom, powder room for the guests, private pool and garden overlooking Arabian Peninsula

#### **First Floor:**

Four bedrooms and a lounge, accessible by both lift and stairs

Living room, Large Master Bedroom with terrace that has a fabulous Arabian Peninsula Sea Views, a large luxurious washroom that has high-end accessories and a striking walk-in closet

Second bedroom also has a washroom, with a decent size terrace, that has a fabulous Arabian Peninsula Sea Views

Third bedrooms high-end washroom is in the lounge, so it can be used with both lounge and the bedroom

#### **Roof Deck:**

The most amazing and unique feature of this villa is the roof deck that has an entertainment foyer, washroom, Jacuzzi with open space that has most spectacular Sea Views of Arabian Peninsula from the Palm Jumeirah

The foyer on the roof is ideal for entertaining guests, it has large windows for the sun light and is equipped with a kitchenette, fridge etc. The foyer can also be used as a bar to entertain guests

It is also accessible from both lift and the stairs

#### **Basement:**

It has covered parking for three vehicles, Maids quarter with washroom, a pantry and a lounge that can be used for theatre or snooker table etc.

The Palm extends 6.5 kilometres into the Arabian Peninsula, and is surrounded by an 11 kilometre-long crescent shaped breakwater built with over 7 million tons of rock and sand. It adds 60 kilometres of beach to the coast of the UAE and will be

used for private beach residences and around 30 five star hotels

Unparalleled luxury, individual attention to detail, breadth of villas can be yours amid amazing surroundings and world-class amenities.

The Palm is primarily a retreat and residential area for living, relaxation, and leisure. It contains themed boutique hotels, villas, shoreline apartment buildings, beaches, marinas, restaurants, cafes and a variety of retail outlets

Home to the infamous Atlantis resort with its opulence and water parks a favourite with tourists and residents of Dubai

The Palm Jumeirah has been the singularly most important property development ever launched in Dubai. It is this project that has created global interest, and which has been responsible for the establishment of Dubai as the up and coming international property destination of choice

**Unit Features:**

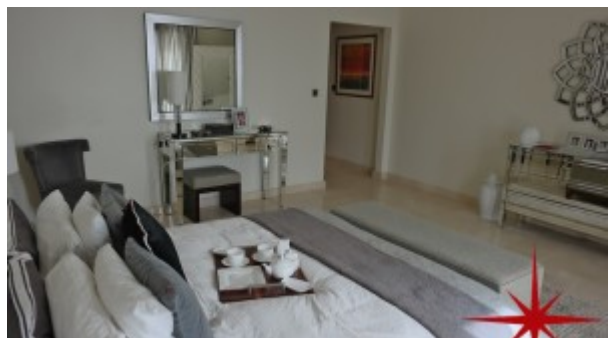
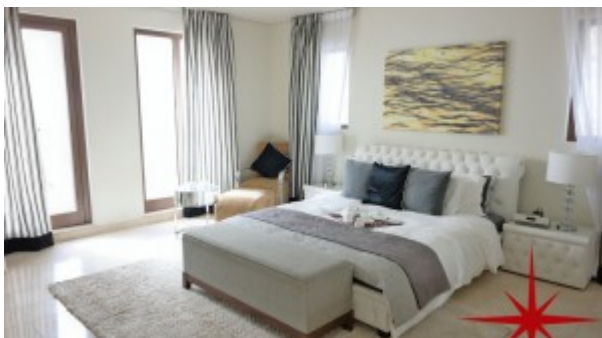
- 4 en-suite bedrooms
- BUA14,425Sq Ft
- Basement
- Built-in wardrobes
- Ceramic tiles
- Fully fitted kitchen with high quality kitchen cabinetry and high-end accessories
- Insulated and double-glazed windows
- Laundry room
- Light fittings (high-end)
- Roof Deck with stunning sea views, entertainment foyer with jacuzzi and washroom
- Store room
- Selected granite tops
- Private Garden
- Private lift
- Private Pool
- Terrace walk-in closet
- Walk-in wardrobes and shelves

**Community Features:**

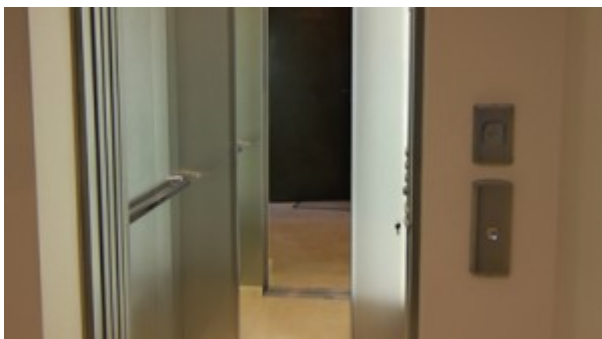
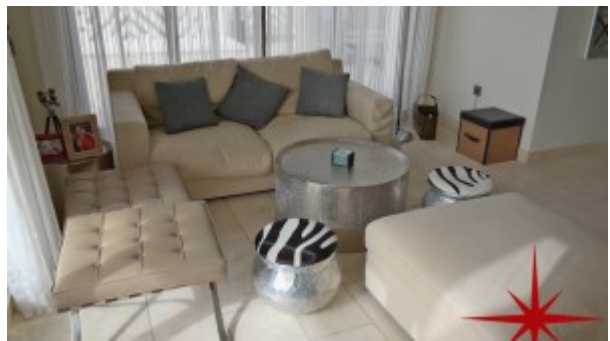
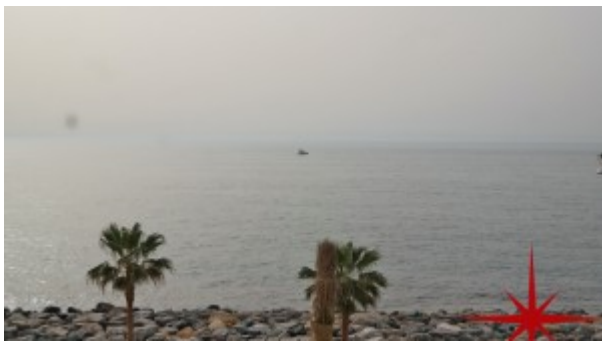
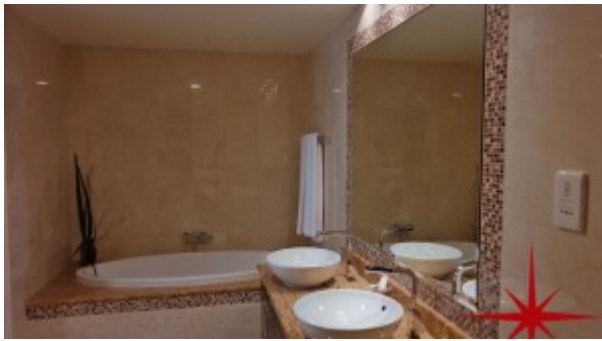
- 24/7 security
- Beach club and gymnasium
- Central A/C
- Children's play area
- Children's play area outside
- Pets allowed
- Restaurants and cafes
- Spa and health center
- Swimming and lap pool
- Visitors parking

Please call us for exclusive viewing  
0566009161/04-3518133  
Permit No. 4742

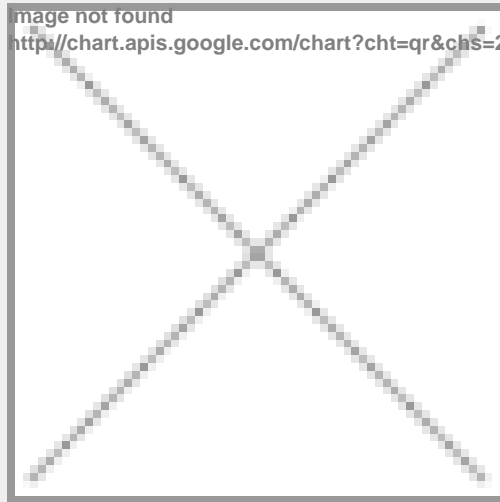
## Property Gallery







## Property URL



http://chart.apis.google.com/chart?cht=qr&chs=250x250&chld=H|0&chl=https%3A%2F%2Fcapellaproperty

<https://capellaproperties.ae/lifestyle/property/palm-jumeirah-exceptional-4-bedrooms-villa-with-roof-deck-a-lift-private-pool-garden-and-spectacular-sea-views/>