

# capella properties

**Marine Luxury At Its Peak On Exclusive Prices, The Floating Seahorse Delivery Q1-2019**

**AED 15,000,000** - ID: I-S-R-TWI-CP-0516-02 - The World Islands The World Islands - Villa



Bedrooms	2
Bathrooms	4
Plot Size	4004 sq ft

Living Area	4004 sq ft
Built in	December 2016
Available From	30-May-2016
Ensuite	2
Furnished	Fully Furnished
Half Bath	2
Price/Area	3746 sq ft
Posting Date	30/05/2016
View	Sea/Dubai Skyline

**BUA 4,004 SqFt, The World, Marine luxury at its peak on exclusive prices, the floating Sea-Horse Delivery Q1-2019**

For detailed virtual tours of properties in Dubai, visit [www.capellaproperties.ae](http://www.capellaproperties.ae)  
capella properties, Redefining Real Estate in Dubai UAE

**Payment plan:**

Instalment 1 – 10% Signing the contract + 4% OQOOD  
Instalment 2 – 10%  
Instalment 3 – 10%  
Instalment 4 – 10%  
Instalment 5 – 10%  
Instalment 6 – at completion / handover (Q1 2019)

One of its Kind, The Floating sea Horse is a truly unique underwater project. Connected to the St Peterburg Island via Floating jetties, the floating seahorses will offer stunning sea and Island views and the ultimate in contemporary marine style living.

Essentially boat without propulsion, each floating seahorse will host three stories, one underwater, one at sea level and an upper deck. Sleeping underwater amongst marine life, the floating seahorse is designed for holidaying, relaxation and quality leisure time. Creating a benchmark in luxury lifestyle industry worldwide for outstanding innovation, contemporary design and underwater living. The uniqueness of the concept lies in the total privacy, tranquility, and serenity with it being a stone's throw away from a host of first-class dining, leisure and entertainment facilities.

Each floating seahorse can provide up to three bedrooms, each with its own character and personality:  
The floating sea-horse is divided into three levels;

**Underwater Master Bedroom and Ensuite bathroom:**

- Panoramic full height underwater safety acrylic glass window panes
- High-quality natural timber veneer wall panels
- Wardrobe equipped with full height high-quality wardrobe finishes
- Full bathroom with high-end finishes and accessories
- Heated mirror with lighting fixtures

**Sea Level Deck:**

- Marine timber deck
- High-quality hammock
- Stainless steel ladder leading into the sea
- Living room area
- Sliding panoramic full height glass windows
- Fully equipped pantry with glossy kitchen cabinets and white goods
- Sleeping accommodation
- Seating area
- Dining room

**Upper Level Deck:**

- Sun lounge area
- Built-in Jacuzzi
- Mini Bar
- Sliding textile enclosure
- Whirlpool

- Informal external bedroom, a canopy that opens up for an open sky
- 01 washroom

**Unit features:**

- BUA 4,004Sq Ft
- 2 parking for speedboats
- 2 en-suite bathroom
- 2 guest toilet
- Built-in wardrobe
- Ceramic Tiles
- Fridge
- Glossy kitchen
- Light fittings
- Microwave
- Jacuzzi
- Sundeck
- Washing machine

**Community features:**

- 24/7 Security
- Concierge service
- Central A/C
- Coffee shop
- Swimming pool
- Children's play area outside
- Firefighting system
- Maintenance
- Private theater
- Restaurants
- Snooker room
- Visitors parking
- World class spa

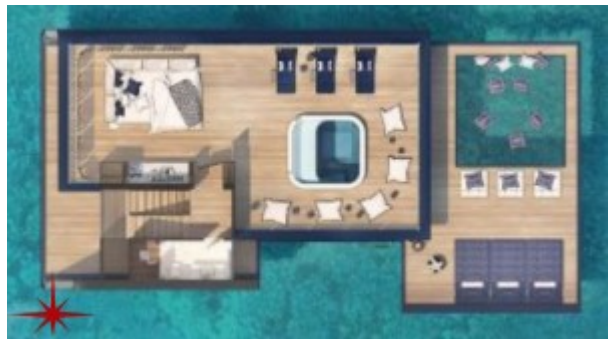
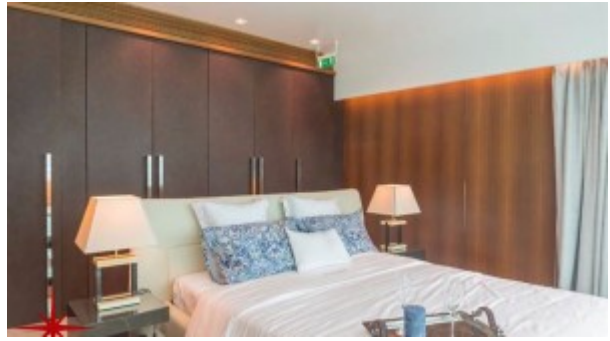
**Please call us for an exclusive viewing**

**056-2054400/04-3518133**

**Permit No. 18285**

## Property Gallery

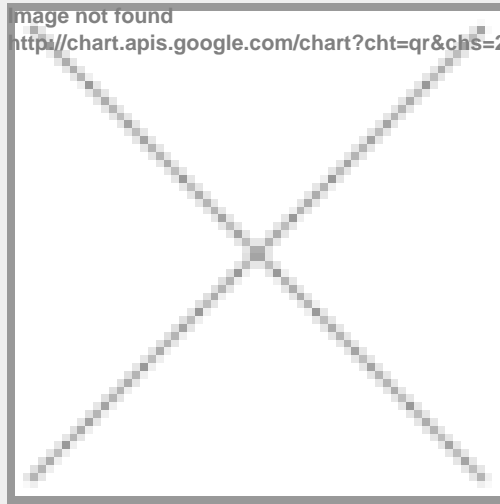








## Property URL



http://chart.apis.google.com/chart?cht=qr&chs=250x250&chld=H|0&chl=https%3A%2F%2Fcapellaproperty

<https://capellaproperties.ae/lifestyle/property/marine-luxury-at-its-peak-on-exclusive-prices-the-floating-seahorse-delivery-dec16-i-s-r-twi-cp-0516-02/>